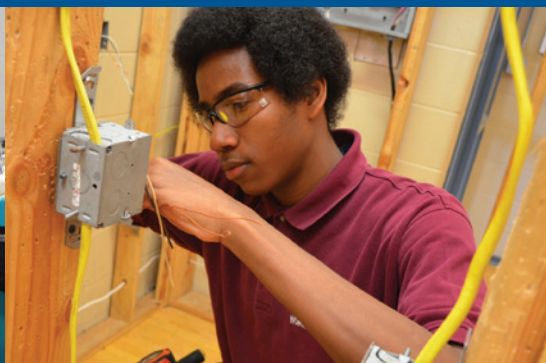
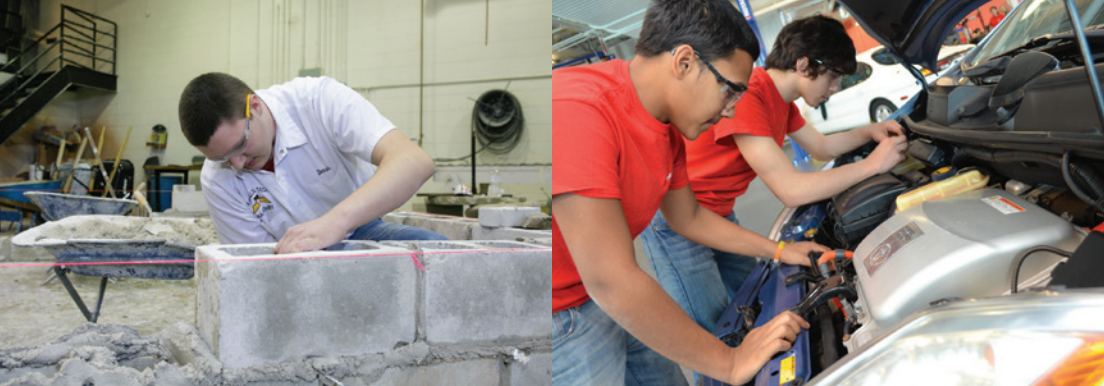


# Work-Based Learning: Mentor the next generation.

**OPPORTUNITIES FOR EXPERIENCED, HARD-WORKING STUDENTS.**



AUTOMATED MANUFACTURING TECHNOLOGY • AUTOMOTIVE COLLISION REPAIR & REFINISHING • AUTOMOTIVE TECHNOLOGY • BIOSCIENCE & ENVIRONMENTAL TECHNOLOGY • BIOTECHNOLOGY • CARPENTRY • CULINARY ARTS • DIESEL & HEAVY-DUTY EQUIPMENT REPAIR • DIGITAL MEDIA • EARLY CHILD CARE & EDUCATION • ELECTRICAL • ELECTRONICS TECHNOLOGY • FACILITIES MANAGEMENT • GRAPHICS TECHNOLOGY • HAIRDRESSING & COSMETOLOGY • HEALTH TECHNOLOGY • HEATING, VENTILATION AND AIR CONDITIONING (HVAC) • INFORMATION SYSTEMS TECHNOLOGY • MARKETING, MANAGEMENT & ENTREPRENEURSHIP • MASONRY • MECHANICAL DESIGN & ENGINEERING TECHNOLOGY • MECHATRONICS • PLUMBING & HEATING • PLUMBING, HEATING & COOLING • PRE-ELECTRICAL ENGINEERING & APPLIED ELECTRONICS TECHNOLOGY • PRECISION MACHINING TECHNOLOGY • SOUND PRODUCTION TECHNOLOGY • SUSTAINABLE ARCHITECTURE • TOURISM, HOSPITALITY & GUEST SERVICES MANAGEMENT • WELDING & METAL FABRICATION



## **WHAT IS WORK-BASED LEARNING?**

Work-Based Learning (WBL) enhances the career technology experience that a student receives in the Connecticut Technical High School System (CTHSS). It provides juniors and seniors with real-world work experience, as well as the responsibilities associated with having a job in their chosen field. Juniors are able to dedicate 14 hours each week to their job and seniors can contribute 21 hours. Employers often hire two of our students to fill a full-time position.

---

## **WHY SHOULD COMPANIES PARTICIPATE?**

When companies participate in WBL, they receive experienced, responsible students who possess a strong work ethic. Juniors in the program already have 700 hours of experience in their chosen technology and seniors have 1,000. You can hire CTHSS students for entry-level positions, but little to no training is required – saving you money. Most CTHSS students are available for full-time employment after graduation and are more likely to advance through the company because of their extensive experience. In fact, over 300 companies in Connecticut, Massachusetts, Rhode Island and New York participate in CTHSS's WBL program.

## **WHAT TYPES OF STUDENTS PARTICIPATE?**

Any student who wishes to participate in the WBL program must meet specific requirements:

- Students are at least 16 years of age.
- They are a junior or a senior.
- They have a grade average of 70 or above with no failing grades.
- They follow all school attendance and discipline policies.
- They get parental permission and provide their own transportation to the worksite.
- They must be registered with the Department of Labor as a pre-apprentice when necessary.



## HOW ARE EMPLOYERS COVERED?

When you hire CTHSS students through the WBL program you do not have to pay for unemployment insurance and you can apply for ratio relief if your student doesn't work full-time. The school and the student handle all of the paperwork to get permission from the state and from their parents. They will have all of the proper insurance in place before the start date. Employers will have to create performance objectives and supply regular evaluations for each of their WBL students.

---

"I have worked for Ryder since 2011. I started as a Tech on the floor and worked my way to Tech In Charge to now Senior Service Manager. The Connecticut Technical High School System's Work-Based Learning program did wonders for me. I really can't say enough about that program."

— Devon Gladysz, Senior Service Manager (Connecticut Technical High School Alumni), Ryder System, Inc.

Work-Based Learning provides employers like you — all across New England — with highly motivated, experienced student workers. The program helps to bring the workforce of tomorrow to employers today. WBL provides you with the ability to build capacity within your industry, at the same time, training students for full-time employment after graduation should you want to offer them a position.

**For more information on Work-Based Learning,** go to **cttech.org** or contact Heidi Griffen at **860.807.2138** or **Heidi.Griffen@ct.gov**.

## A FEW OF OUR WORK-BASED LEARNING PARTNERS

We have over 500 students employed by more than 500 of our Work-Based Learning partners including:



---

"We have had an excellent relationship with the Connecticut Technical High School System for more than eight years. The experience has been nothing less than great. The students come to us with sound fundamentals of their skills and a great work ethic. I would highly recommend anyone considering using students through the cooperative work experience at one of the Connecticut Technical High Schools to do so."

— Bob Norton, Operations Manager, All Waste, Inc.

---



25 Industrial Park Road  
Middletown, CT 06457  
Ph: 860.807.2200  
Fax: 860.807.2196  
[cttech.org](http://cttech.org)

